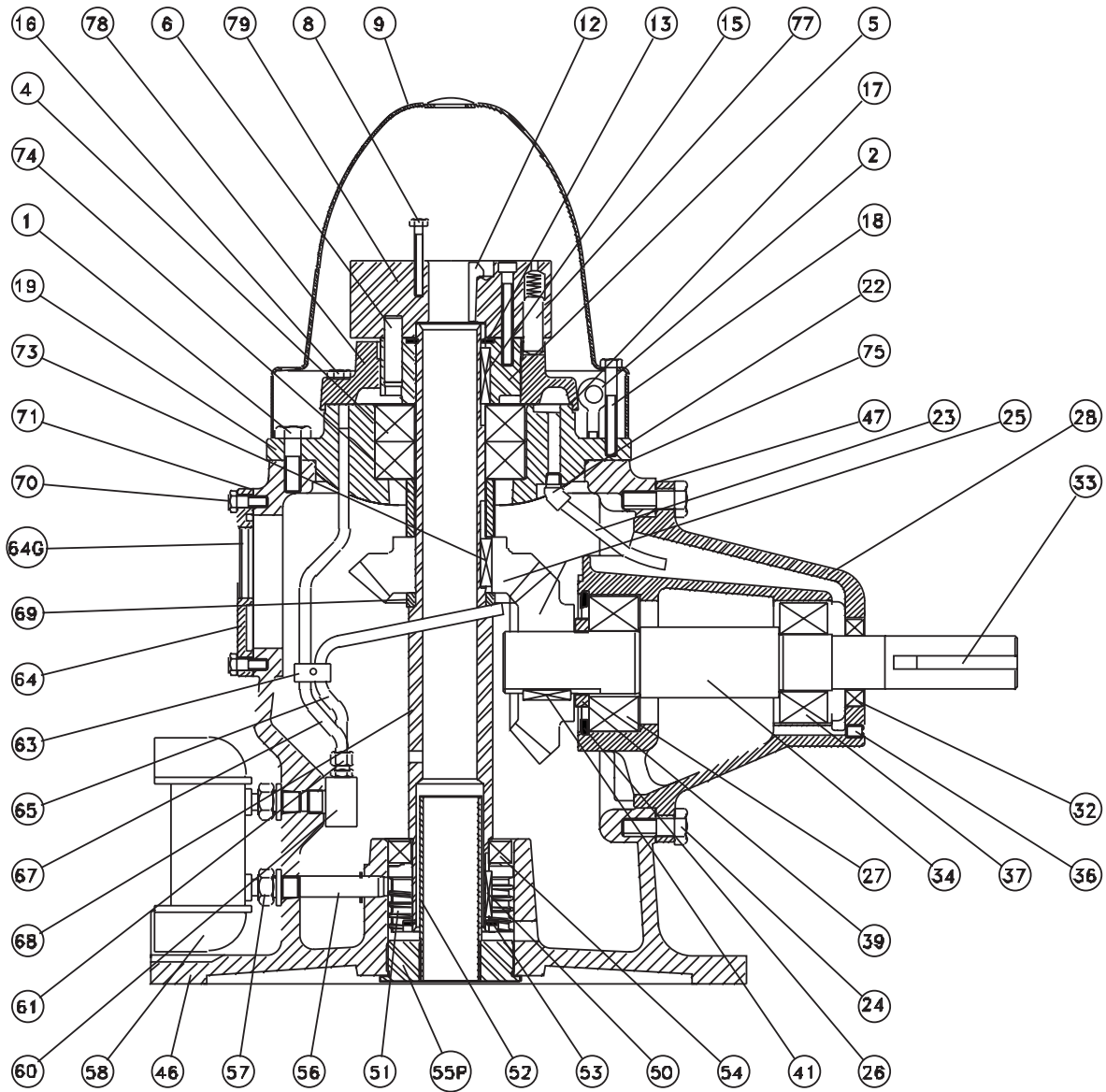


TYPICAL MODEL H-20 - H-60



No.	Part Name	No.	Part Name	No.	Part Name	No.	Part Name
1	Capscrew-Thrust Cage	*22	Flexible Tube Fitting	46	Main Housing	64	Inspection Plate
*2	Lifting Eyebolt	*23	Flexible Tube	47	Shim-Horz. Housing	*64G	Oil Sight Glass
4	Thrust Bearing	24	Capscrew-Horiz. Housing	50	Key-Pump Runner	65	Oil Tube To Gears
5	Lower Coupling	25	Gears	51	Pump Runner	67	Oil Tube to Thrust Brg.
6	Coupling Pin	26	Internal Snap Ring	52	Seal Tube	68	Hollow Shaft
8	Capscrew	27	Inner Bearing	53	External Snap Ring	*69	Vertical U.G. Spacer
9	Dome	28	Horizontal Housing	54	Pump Bearing	70	Capscrew-Insp. Plate
12	Gib Key	32	Oil Seal	55P	Seal Plug	71	Gasket-Insp. Plate
13	External Snap Ring	33	Key	*56	Oil Tube From Pump	73	Key-Driven Gear
15	Key-Lower Coupling	34	Drive Shaft	*57	Cooler Flexible Fittings	74	Vertical M.D. Spacer
16	Capscrew-Thrust Cover	36	Drain Plug-Set Screw	*58	Oil Cooler (H60 Only)	75	Shim-Thrust Brg. Cage
17	Gasket-Thrust Cover	37	Outer Bearing	60	Oil Distributor	77	Ratchet Pins
18	Capscrew-Dome	39	Horizontal M.D. Spacer	63	Oil Tube Clamp	78	Thrust Bearing Cover
19	Thrust Bearing Cage	41	Key-Drive Gear			79	Upper Clutch

* These parts are not universal and are omitted in certain ratios and models.